



# SMARTLUX 300 TWIN WM

## Multi-purpose luminaire in compliance with EN 60598-1/2-22 and EN 1838.

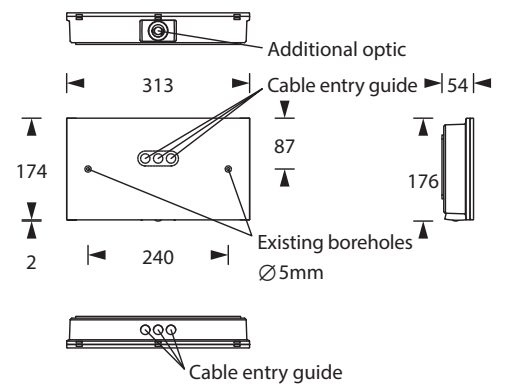
Combined escape sign and emergency luminaire made of white polycarbonate with clear cap and simple, screwless mounting by click system. Luminaire for single-sided pictogram equipment for wall mounting and simultaneous illumination of areas or escape routes. The optics for surface illumination are already pre-mounted, those for escape routes are enclosed. The luminaire price includes one plug-in pictogram foil set per luminaire - arrow left/right/down/up/blind (Visibility distance 30 m). The luminaire is equipped with a 1,5 Watt LED-bar and additionally with a 3 Watt Power LED. Despite the combination of two types of luminaires, this luminaire is only a single luminaire. Therefore, it is also counted as only one luminaire in the circuit.



## Technical specifications

Luminaire type	Luminaires for central battery systems	Self contained luminaires
Illuminant	1.5 W LED-bar	1.5 W LED-bar
Illuminant safety modul	3W LED	3W LED
Visibility distance	30 m	
Connecting terminals	2 x 2.5 mm <sup>2</sup> for double assignment	
Colour	white	
Material	Polycarbonate (light cover clear)	
Mounting type	Wall mounting	
Dimensions (W x H x D)	WM 313 x 176 x 54 mm	
Protection class	IP43	
Safety class	II	
IK Safety class	IK03	
Light current (mains)	190 lm	190 lm
Luminous flux Emergency (DC) / mains		
Rated operating time 1h	-	40% / 100%
Rated operating time 3h	-	40% / 100%
Light (Net) current safety module	190 lm	-
Light current (Emergency) safety module		
Rated operating time 1h	-	190 lm
Rated operating time 3h	-	190 lm
Luminous flux Emergency (DC) / mains safety module		
Rated operating time 1h	-	100% / 0%
Rated operating time 3h	-	100% / 0%
Power consumption	11 VA	10 VA
Battery current input	27 mA	-
Battery duration	-	1h / 3h
Battery operation		
Voltage supply	230V 50/60Hz; 220V DC +25/-20%	230V 50/60Hz
NiMH-battery		
Rated operating time 1h	-	4,8V 2,0Ah
Rated operating time 3h	-	4,8V 2,0Ah
Temperature range	-10°C to +40°C	-
Non-maintained mode	-	0°C to +35°C
Maintained mode	-	-5°C to +30°C
Circuit options		
Pictogram	maintained mode DS maintained mode DS (no monitoring), DS / BS switchable (with monitoring module)	DS / BS switchable
Safety modul		non-maintained mode BS

## Wall mounting



optional		
Multi-switch and monitoring module	ELC MSÜ3 SET009 SET010	-
Self monitoring	-	SELF CHECK
Central monitoring	-	SAFELOG Line
Wireless monitoring	-	SAFELOG Wireless

### Pictogram-set - included in the delivery



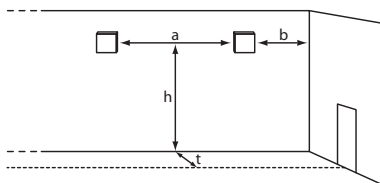
### Optional pictograms (-sets)



### Accessories

Wire guard
Pictograms

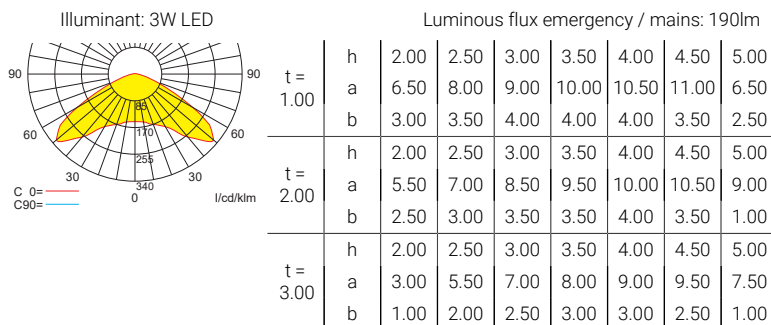
### Lighting data and tables of luminaire distances (E = 1.25 lx)



Wall mounting

#### Luminaires for central battery systems wide area optics

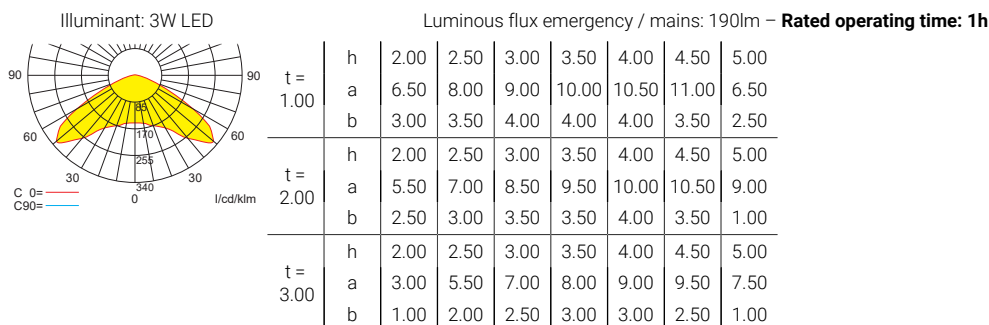
Distance table for plane emergency routes / distance data in meters



t = distance to escape middle

#### Self contained luminaires wide area optics

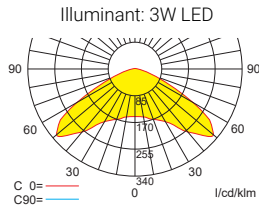
Distance table for plane emergency routes / distance data in meters



t = distance to escape middle

**Self contained luminaires wide area optics**

Distance table for plane emergency routes / distance data in meters



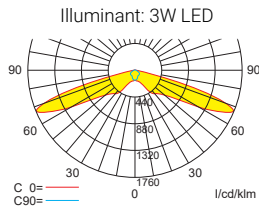
Luminous flux emergency / mains: 190lm – **Rated operating time: 3h**

t =		h	2.00	2.50	3.00	3.50	4.00	4.50	5.00
		1.00	a	6.50	8.00	9.00	10.00	10.50	11.00
	b	3.00	3.50	4.00	4.00	4.00	3.50	2.50	
2.00	h	2.00	2.50	3.00	3.50	4.00	4.50	5.00	
	a	5.50	7.00	8.50	9.50	10.00	10.50	9.00	
	b	2.50	3.00	3.50	3.50	4.00	3.50	1.00	
3.00	h	2.00	2.50	3.00	3.50	4.00	4.50	5.00	
	a	3.00	5.50	7.00	8.00	9.00	9.50	7.50	
	b	1.00	2.00	2.50	3.00	3.00	2.50	1.00	

t = distance to escape middle

**Luminaires for central battery systems escape route optics**

Distance table for plane emergency routes / distance data in meters



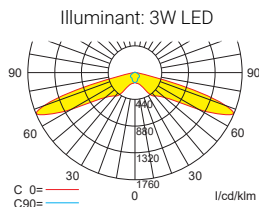
Luminous flux emergency / mains: 190lm

t =		h	2.00	2.50	3.00	3.50	4.00	4.50	5.00
		1.00	a	9.00	11.00	13.00	14.50	15.50	16.50
	b	3.00	3.00	3.50	3.50	3.50	3.00	2.00	
2.00	h	2.00	2.50	3.00	3.50	4.00	4.50	5.00	
	a	4.00	5.00	6.00	6.50	6.50	6.00	4.50	
	b	1.50	2.00	2.00	2.00	2.00	1.00	0.50	

t = distance to escape middle

**Self contained luminaires escape route optics**

Distance table for plane emergency routes / distance data in meters



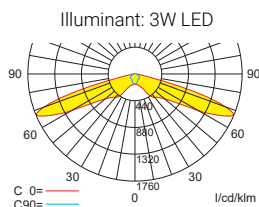
Luminous flux emergency / mains: 190lm – **Rated operating time: 1h**

t =		h	2.00	2.50	3.00	3.50	4.00	4.50	5.00
		1.00	a	9.00	11.00	13.00	14.50	15.50	16.50
	b	3.00	3.00	3.50	3.50	3.50	3.00	2.00	
2.00	h	2.00	2.50	3.00	3.50	4.00	4.50	5.00	
	a	4.00	5.00	6.00	6.50	6.50	6.00	4.50	
	b	1.50	2.00	2.00	2.00	2.00	1.00	0.50	

t = distance to escape middle

**Self contained luminaires escape route optics**

Distance table for plane emergency routes / distance data in meters



Luminous flux emergency / mains: 190lm – **Rated operating time: 3h**

t =		h	2.00	2.50	3.00	3.50	4.00	4.50	5.00
		1.00	a	9.00	11.00	13.00	14.50	15.50	16.50
	b	3.00	3.00	3.50	3.50	3.50	3.00	2.00	
2.00	h	2.00	2.50	3.00	3.50	4.00	4.50	5.00	
	a	4.00	5.00	6.00	6.50	6.50	6.00	4.50	
	b	1.50	2.00	2.00	2.00	2.00	1.00	0.50	

t = distance to escape middle