



# A-LUX Q WM/DM

## Combined emergency luminaire in compliance with EN 60598-1/2-22 and EN 1838.

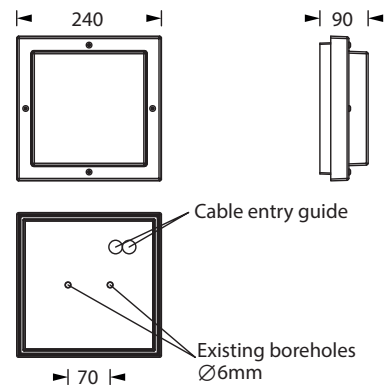
Robust general and safety luminaire with a square luminaire body made of powder-coated die-cast aluminum in white or graphite grey and an opal polycarbonate luminaire cover. The self-contained luminaire can also be equipped with a battery heater to extend the temperature range down to -20°C. In a set with a supply unit for indoor installation and a light unit for outdoor installation, the temperature range can even be extended to -35°C. The luminaire is equipped with 4x 3.5W LED strips and provides 1.160lm with a light color of 4.000K.



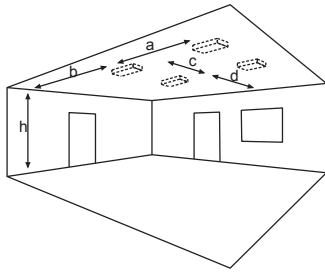
## Technical specifications

Luminaire type	Luminaires for central battery systems	Self contained luminaires
Illuminant	4 x 3.5 W LED-bar	4 x 3.5 W LED-bar
Connecting terminals	3 x 2.5 mm <sup>2</sup> for double assignment	
Colour	white / graphite grey	
Material	Aluminum die-cast/Polycarbonate	
Light color	4000K	
Mounting type	Wall-/ceiling mounting	
Dimensions (W x H x D)	WM/DM 240 x 90 x 240 mm	
Protection class	IP65	
Safety class	I	
IK Safety class	IK10	
Light current (mains)	1160 lm	1160 lm
Light current (emergency)		
Rated operating time 1h	-	660 lm
Rated operating time 3h	-	660 lm
Rated operating time 8h	-	330 lm
Luminous flux		
Emergency (DC) / mains		
Rated operating time 1h	-	56% / 100%
Rated operating time 3h	-	56% / 100%
Rated operating time 8h	-	28% / 100%
Power consumption	13 VA	18.7 VA
Battery current input	34 mA	-
Battery duration		
Battery operation		1h / 3h / 8h
Voltage supply	230V 50/60Hz; 220V DC +25/-20%	230V 50/60Hz
NiMH-battery		
Rated operating time 1h	-	4,8V 2,0Ah 4,8V 2,0Ah + AkH
Rated operating time 3h	-	4,8V 4,2Ah 4,8V 4,2Ah + AkH
Rated operating time 8h	-	4,8V 4,2Ah 4,8V 4,2Ah + AkH
Temperature range	-10°C to +40°C (monitored) / -20°C to +40°C (unmonitored)	-
Non-maintained mode	-	0°C to +35°C
Maintained mode	-	-5°C to +30°C
optional		
Multi-switch and monitoring module	ELC MSÜ3 SET009 SET010	-
Self monitoring	-	SELF CHECK
Central monitoring	-	SAFELOG Line
Wireless monitoring	-	SAFELOG Wireless

## Wall-/ceiling mounting



# Lighting data and tables of luminaire distances (E = 1,25 lx)



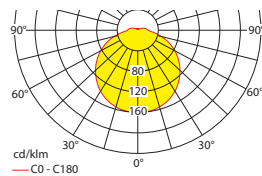
Ceiling mounting

## Luminaires for central battery systems Wide area illumination

Distance table for plane emergency routes / distance data in meters

Illuminant: 4 x 3.5W LED-bar

Luminous flux emergency / mains: 1160lm



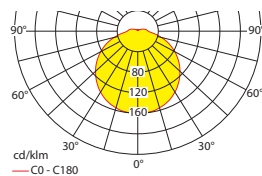
h	2.50	3.00	3.50	4.00	4.50	5.00	5.50	6.00	6.50	7.00	7.50	8.00	8.50	9.00	9.50	10.00	10.50	11.00	11.50	12.00
a	12.50	13.40	14.20	14.90	15.40	15.90	16.30	16.70	17.00	17.20	17.30	17.40	17.50	17.40	17.40	17.20	17.10	16.80	16.50	16.10
b	5.00	5.40	5.60	5.80	6.00	6.10	6.20	6.20	6.20	6.10	6.00	5.90	5.70	5.40	5.10	4.80	4.30	3.70	2.90	1.60
c	12.50	13.40	14.20	14.90	15.40	15.90	16.30	16.70	17.00	17.20	17.30	17.40	17.50	17.40	17.40	17.20	17.10	16.80	16.50	16.10
d	5.00	5.40	5.60	5.80	6.00	6.10	6.20	6.20	6.20	6.10	6.00	5.90	5.70	5.40	5.10	4.80	4.30	3.70	2.90	1.60

## Self contained luminaires Wide area illumination

Distance table for plane emergency routes / distance data in meters

Illuminant: 4 x 3.5W LED-bar

Luminous flux emergency / mains: 660lm/1160lm – Rated operating time: 1h



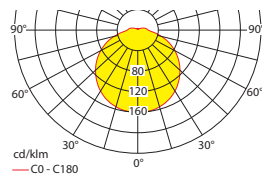
h	2.50	3.00	3.50	4.00	4.50	5.00	5.50	6.00	6.50	7.00	7.50	8.00	8.50	9.00
a	10.50	11.20	11.80	12.20	12.60	12.80	13.00	13.10	13.20	13.10	13.00	12.80	12.50	12.20
b	4.20	4.40	4.50	4.60	4.70	4.60	4.60	4.40	4.30	4.00	3.60	3.20	2.50	1.40
c	10.50	11.20	11.80	12.20	12.60	12.80	13.00	13.10	13.20	13.10	13.00	12.80	12.50	12.20
d	4.20	4.40	4.50	4.60	4.70	4.60	4.60	4.40	4.30	4.00	3.60	3.20	2.50	1.40

## Self contained luminaires Wide area illumination

Distance table for plane emergency routes / distance data in meters

Illuminant: 4 x 3.5W LED-bar

Luminous flux emergency / mains: 660lm/1160lm – Rated operating time: 3h



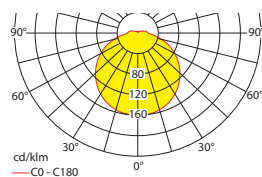
h	2.50	3.00	3.50	4.00	4.50	5.00	5.50	6.00	6.50	7.00	7.50	8.00	8.50	9.00
a	10.50	11.20	11.80	12.20	12.60	12.80	13.00	13.10	13.20	13.10	13.00	12.80	12.50	12.20
b	4.20	4.40	4.50	4.60	4.70	4.60	4.60	4.40	4.30	4.00	3.60	3.20	2.50	1.40
c	10.50	11.20	11.80	12.20	12.60	12.80	13.00	13.10	13.20	13.10	13.00	12.80	12.50	12.20
d	4.20	4.40	4.50	4.60	4.70	4.60	4.60	4.40	4.30	4.00	3.60	3.20	2.50	1.40

## Self contained luminaires Wide area illumination

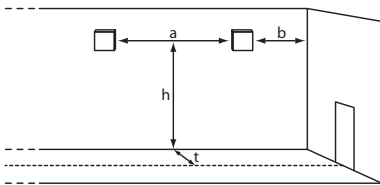
Distance table for plane emergency routes / distance data in meters

Illuminant: 4 x 3.5W LED-bar

Luminous flux emergency / mains: 330lm/1160lm – Rated operating time: 8h



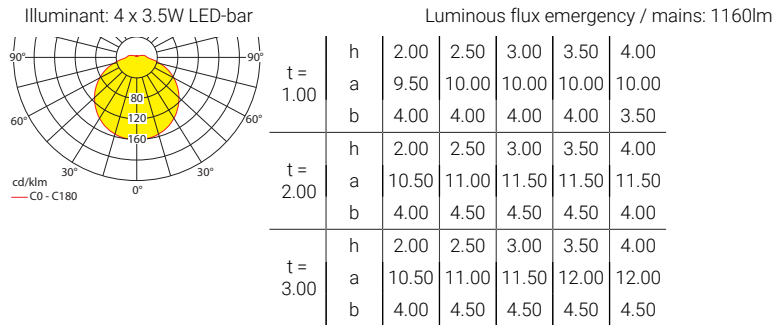
h	2.50	3.00	3.50	4.00	4.50	5.00	5.50	6.00	6.50
a	8.30	8.80	9.10	9.30	9.30	9.30	9.10	8.90	8.50
b	3.20	3.30	3.30	3.20	3.00	2.80	2.40	1.80	0.20
c	8.30	8.80	9.10	9.30	9.30	9.30	9.10	8.90	8.50
d	3.20	3.30	3.30	3.20	3.00	2.80	2.40	1.80	0.20



Wall mounting

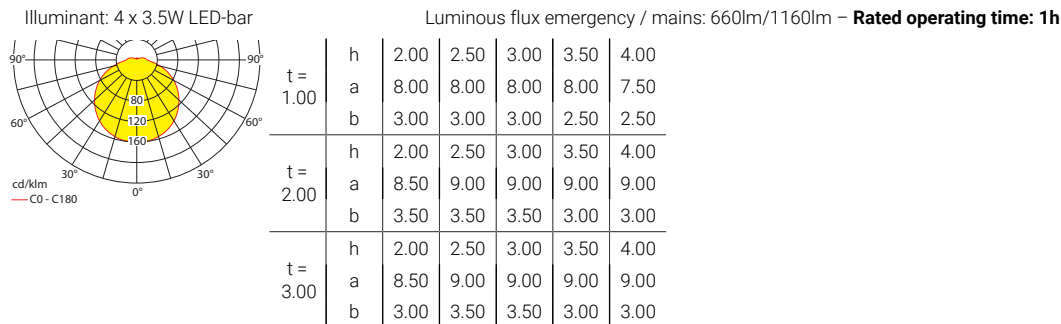
**Luminaires for central battery systems Wide area illumination**

Distance table for plane emergency routes / distance data in meters



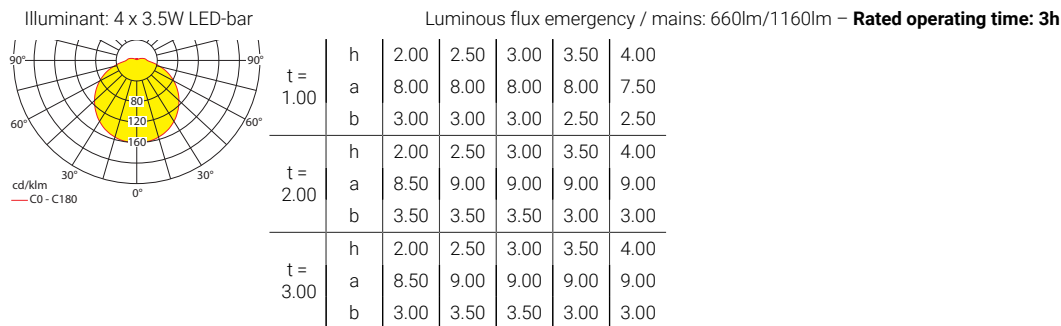
**Self contained luminaires Wide area illumination**

Distance table for plane emergency routes / distance data in meters



**Self contained luminaires Wide area illumination**

Distance table for plane emergency routes / distance data in meters



**Self contained luminaires Wide area illumination**

Distance table for plane emergency routes / distance data in meters

