



E-LINE 200 BEL WM/DM

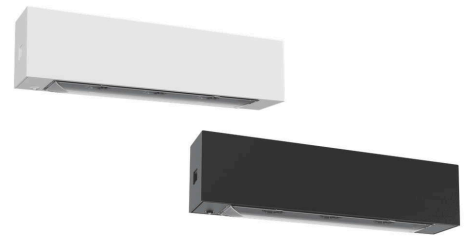
Safety luminaire in compliance with EN 60598-1/2-22 and EN 1838.

Simple IP54 safety luminaire made of polycarbonate in white or black with clear cover. Screwless, easy-to-use locking mechanism. The luminaire can be used for wall or ceiling mounting and is used for area illumination. The luminaire is equipped with a 2 Watt LED bar.

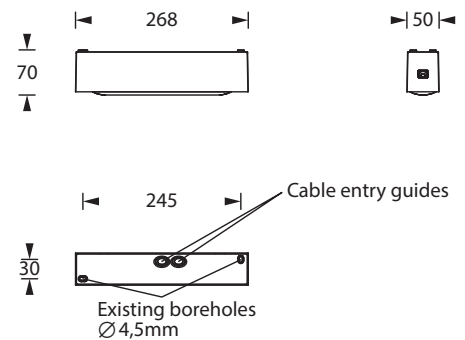
Technical specifications

Luminaire type	Luminaires for central battery systems	Self contained luminaires
Illuminant	2 W LED-bar	2 W LED-bar
Connecting terminals	2 x 2.5 mm ² for double assignment	
Colour	white / black	
Material	Polycarbonate (light cover clear)	
Mounting type	Wall-/ceiling mounting	
Additional mounting types*	Recessed mounting, Ceiling mounting (wire suspension), Pendulum mounting	
Dimensions (W x H x D)	WM/DM 268 x 70 x 50 mm	
Protection class	IP54	
Safety class	II	
IK Safety class	IK03	
Light current (mains)	240 lm	240 lm
Light current (emergency)		
Rated operating time 1h	-	240 lm
Rated operating time 3h	-	240 lm
Rated operating time 8h	-	110 lm
Luminous flux		
Emergency (DC) / mains		
Rated operating time 1h	-	100% / 100%
Rated operating time 3h	-	100% / 100%
Rated operating time 8h	-	45% / 100%
Power consumption	5.5 VA	5.5 VA
Battery current input	14 mA	-
Battery duration	-	1h / 3h / 8h
Battery operation		
Voltage supply	230V 50/60Hz; 220V DC +25/-20%	230V 50/60Hz
NiMH-battery		
Rated operating time 1h	-	4,8V 2,0Ah
Rated operating time 3h	-	4,8V 2,0Ah
Rated operating time 8h	-	4,8V 2,0Ah
Temperature range	-10°C to +40°C	-
Non-maintained mode	-	0°C to +35°C
Maintained mode	-	-5°C to +30°C
optional		
Multi-switch and monitoring module	ELC MSÜ3 SET009 SET010	-
Self monitoring	-	SELF CHECK
Central monitoring	-	SAFELOG Line
Wireless monitoring	-	SAFELOG Wireless

* Optional accessory required



Wall-/ceiling mounting



Accessories

Wire guard

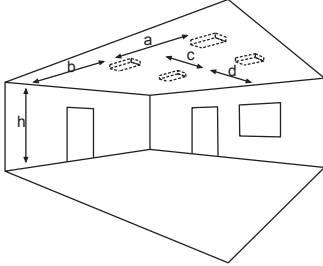
Recessed ceiling housing - E-LINE 200

Central pendulum - E-LINE

Cable assembly set

Set for parallel wall mounting

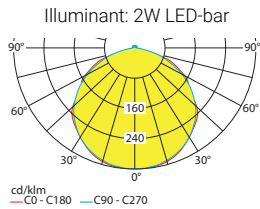
Lighting data and tables of luminaire distances (E = 1,25 lx)



Ceiling mounting

Luminaires for central battery systems Wide area illumination

Distance table for plane emergency routes / distance data in meters

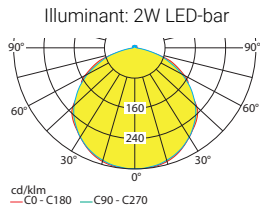


Luminous flux emergency / mains: 240lm

h	2.50	3.00	3.50	4.00	4.50	5.00	5.50	6.00	6.50	7.00	7.50
a	9.00	9.60	10.20	10.60	10.80	11.00	11.10	11.10	11.00	10.80	10.50
b	3.60	3.80	3.90	3.90	3.90	3.80	3.60	3.40	3.00	2.50	1.60
c	9.20	9.80	10.00	10.30	10.70	11.10	11.30	11.30	11.10	10.90	10.50
d	3.60	3.70	3.90	4.00	4.00	3.80	3.60	3.40	3.00	2.50	1.70

Self contained luminaires Wide area illumination

Distance table for plane emergency routes / distance data in meters

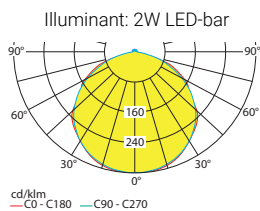


Luminous flux emergency / mains: 240lm/240lm - Rated operating time: 1h

h	2.50	3.00	3.50	4.00	4.50	5.00	5.50	6.00	6.50	7.00	7.50
a	9.00	9.60	10.20	10.60	10.80	11.00	11.10	11.10	11.00	10.80	10.50
b	3.60	3.80	3.90	3.90	3.90	3.80	3.60	3.40	3.00	2.50	1.60
c	9.20	9.80	10.00	10.30	10.70	11.10	11.30	11.30	11.10	10.90	10.50
d	3.60	3.70	3.90	4.00	4.00	3.80	3.60	3.40	3.00	2.50	1.70

Self contained luminaires Wide area illumination

Distance table for plane emergency routes / distance data in meters

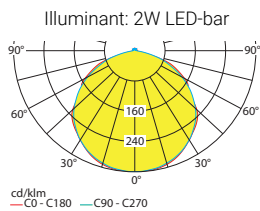


Luminous flux emergency / mains: 240lm/240lm - Rated operating time: 3h

h	2.50	3.00	3.50	4.00	4.50	5.00	5.50	6.00	6.50	7.00	7.50
a	9.00	9.60	10.20	10.60	10.80	11.00	11.10	11.10	11.00	10.80	10.50
b	3.60	3.80	3.90	3.90	3.90	3.80	3.60	3.40	3.00	2.50	1.60
c	9.20	9.80	10.00	10.30	10.70	11.10	11.30	11.30	11.10	10.90	10.50
d	3.60	3.70	3.90	4.00	4.00	3.80	3.60	3.40	3.00	2.50	1.70

Self contained luminaires Wide area illumination

Distance table for plane emergency routes / distance data in meters



Luminous flux emergency / mains: 110lm/240lm - Rated operating time: 8h

h	2.50	3.00	3.50	4.00	4.50	5.00					
a	6.90	7.20	7.30	7.30	7.20	6.90					
b	2.60	2.60	2.40	2.20	1.80	1.00					
c	6.70	7.10	7.40	7.50	7.30	6.90					
d	2.60	2.60	2.50	2.20	1.80	1.00					