



# LBOARD A200 RIVA WM/DM

## Exit luminaire in compliance with EN 60598-1/2-22 and EN 1838.

One-sided exit luminaire in white made of sheet steel for dynamic escape route guidance.

The luminaire will be delivered as universal construction and can be used for ceiling or wall parallel mounting by using an optional wall adapter.

The pictogram of the luminaire is able to indicate two different states (evacuation and blocking).

An evacuation arrow direction (one-sided) can always be selected and must be specified separately when ordering.

The blocking symbol is an integral part of the disc and therefore cannot be deselected.



## Technical specifications

Luminaire type	Luminaires for central battery systems
Illuminant	1 W LED-bar
Visibility distance	23 m
Connecting terminals	3 x 2.5 mm <sup>2</sup> for double assignment
Connecting terminals RIVA	2 x 1.5 mm <sup>2</sup> for double assignment
Colour	white
Material	Sheet steel
Mounting type	Wall-/ceiling mounting
Dimensions (W x H x D)	DM 274 x 213 x 46 mm WM 274 x 237 x 48 mm
Pane dimensions (W x H x D)	248 x 148 x 10 mm
Protection class	IP40
Safety class	I
IK Safety class	IK03
Light current (mains)	130 lm
Power consumption	4.5 VA
Battery current input	11 mA
Voltage supply	230V 50/60Hz; 220V DC +25/-20%
Temperature range optional	-10°C to +40°C
Multi-switch and monitoring module	ELC MSÜ3 SET009 SET010

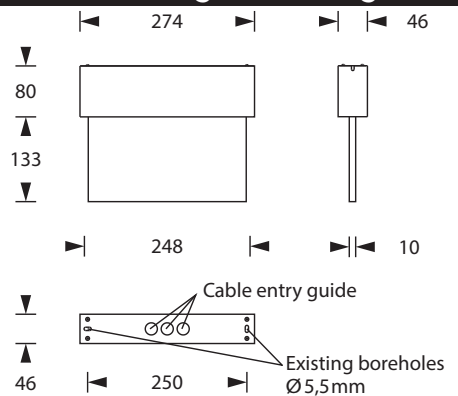
## Pictograms to choose from - please specify when ordering



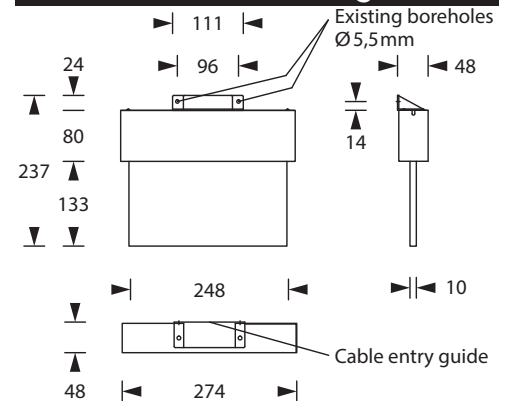
## Accessories

- Wire guard
- Cable surface mounting set
- Chain assembly set
- Central pendulum - Aluminum/Plastic
- Cable assembly set
- Wall bracket
- Wall adapter
- Pictograms

## Ceiling mounting



## Wall mounting



The DSZ enables dynamic escape routing (DFWL). The DSZ is used for evacuation from a dangerous area into a safe area.

## Escape route clear



## Escape route blocked

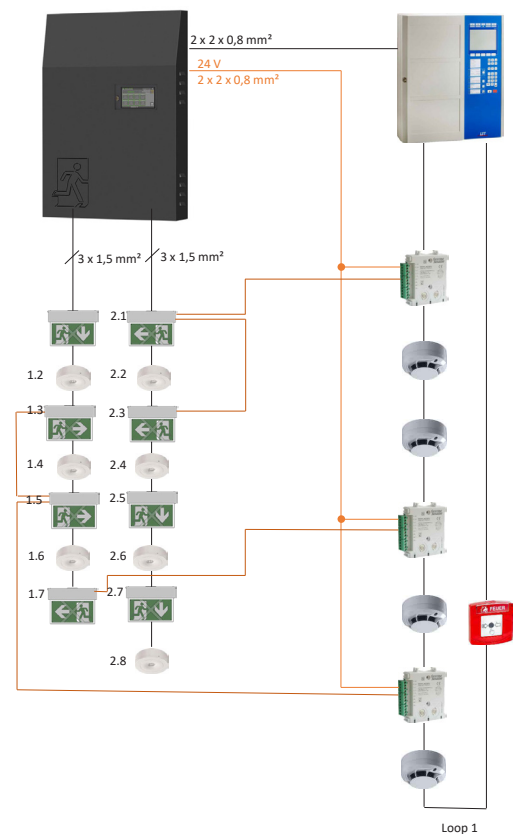
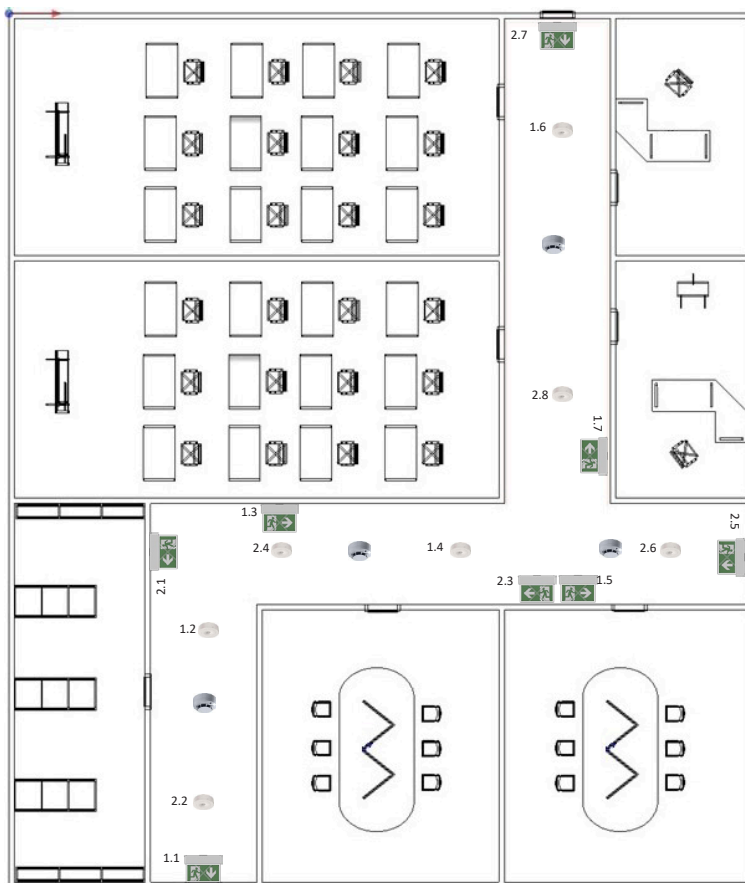


The escape and rescue route is blocked with a red "X", whereby the escape sign is not backlit. Different operating modes can be set on the DSZ, for example a static or flashing red "X".

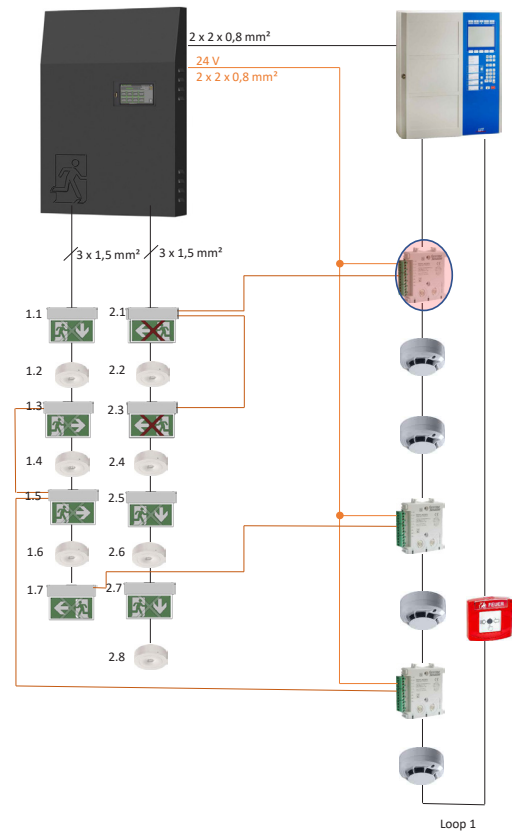
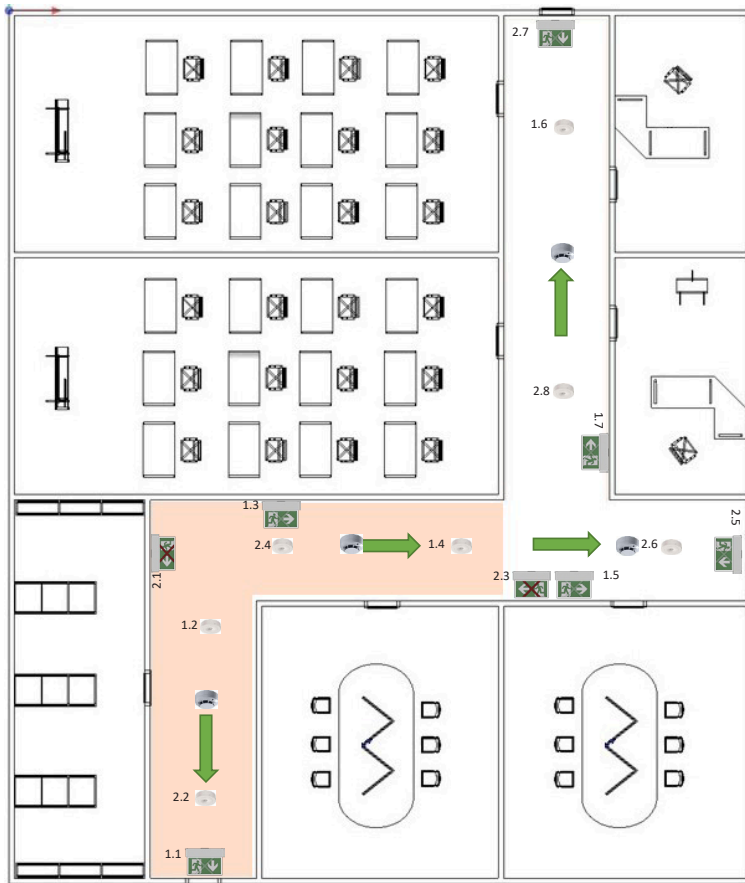
## Modes of operation:

How can RIVA luminaires block escape/rescue routes in conjunction with a fire alarm system?

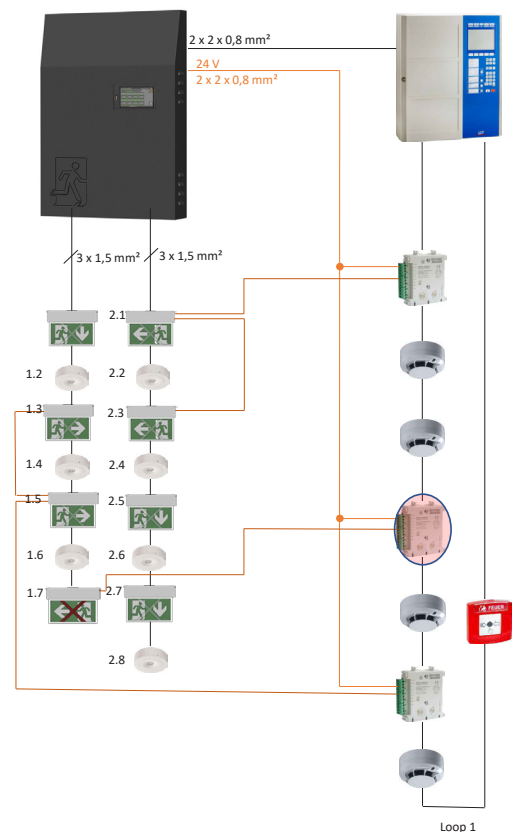
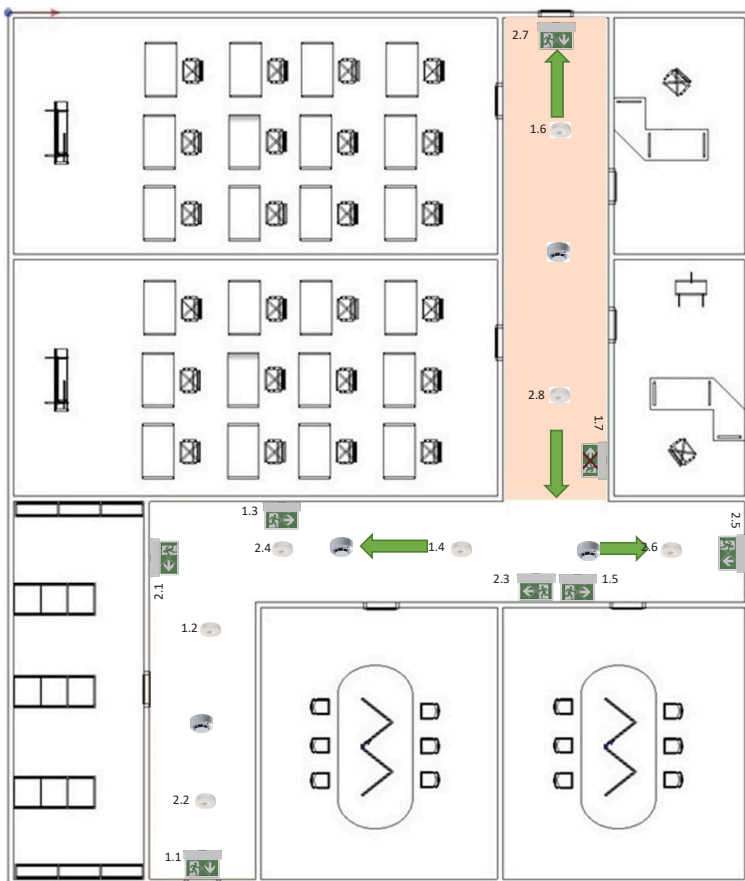
**Normal state:** No danger ⇒ All routes unblocked



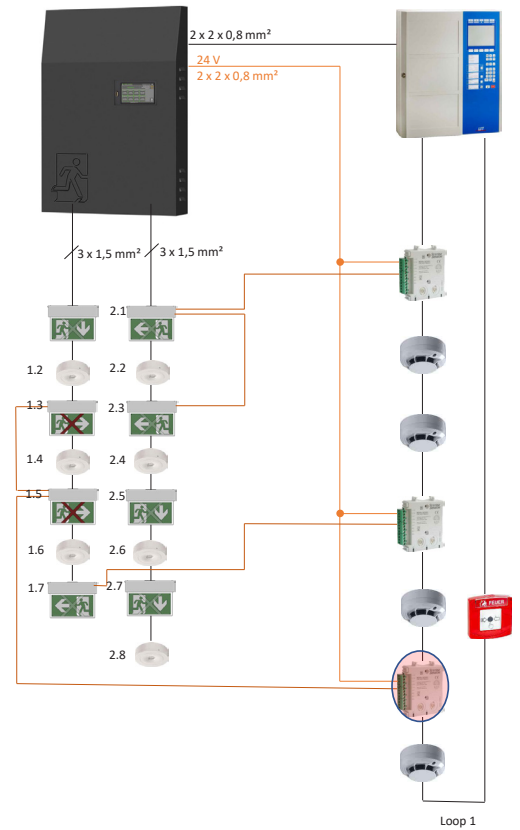
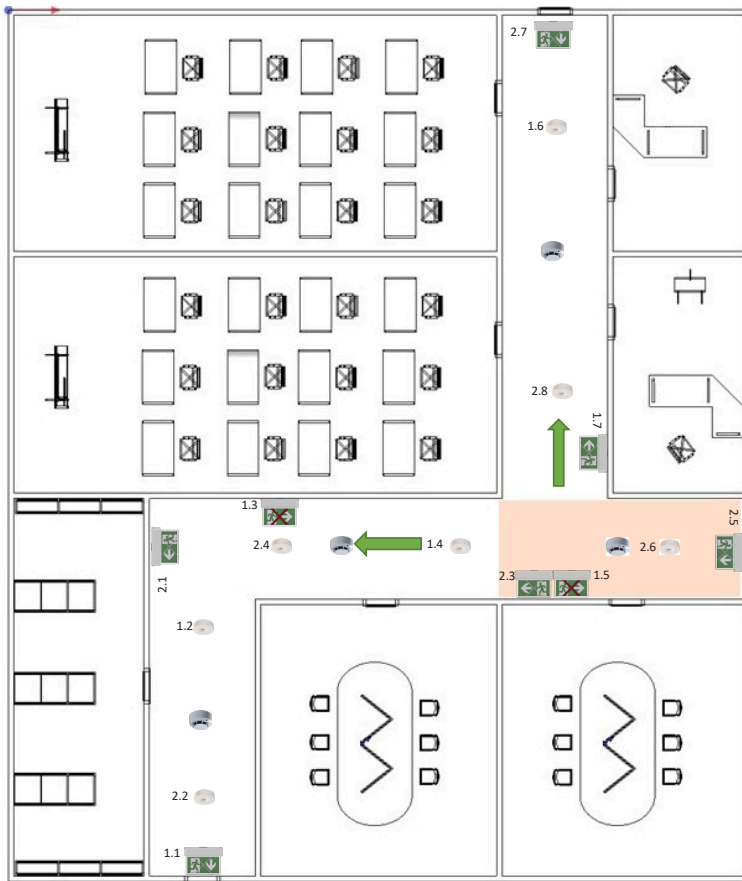
**Scenario 1: Fire in area A** ⇒ Fire alarm system gives control signal to rescue signs 2.1 and 2.3 and blocks (red X) so that no persons run into or through the dangerous area



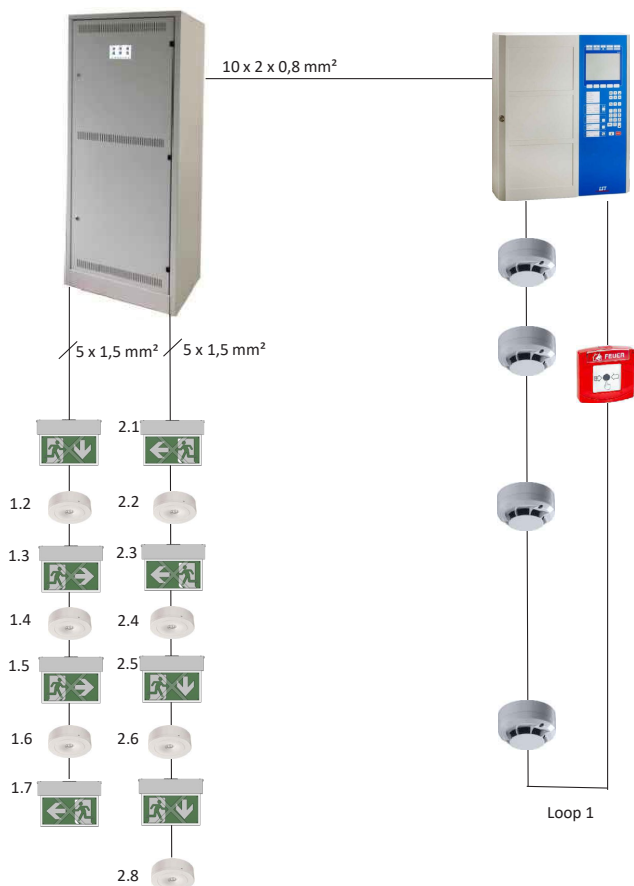
**Scenario 2: Fire in area B** ⇒ Fire alarm system gives control signal to rescue sign 1.7 and locks (red X) so that no persons can run into the dangerous area



**Scenario 3: Fire in area C** ⇒ Fire alarm system gives control signal to escape signs 1.3 and 1.5 and blocks (red X) so that no people run into or through the dangerous area



**Connection diagram (example): RIVA luminaires in connection with fire alarm system and CPS/LPS**



**NOTE:**  
The exact wiring diagram must be requested from the manufacturer of the fire alarm system or CPS / LPS-System