



ARCLUX

Safety luminaire according to EN 60598-1/2-22 and EN 1838.

General and safety luminaire with optional microwave motion sensor, suitable for monitored control gear with switching input. The cover is opal and made of PMMA (thermoplastic material), the lower part is made of sheet steel. Very fast, screwless mounting.

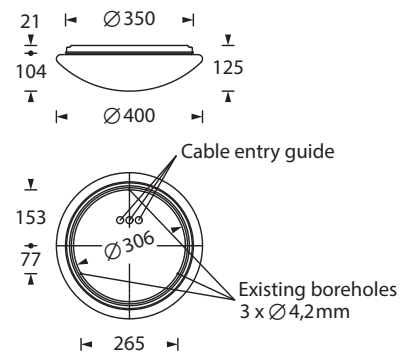
The luminaire is suitable for wall and ceiling mounting and has an output of 1.250lm or 2.500lm and as a single battery luminaire 1.000lm.



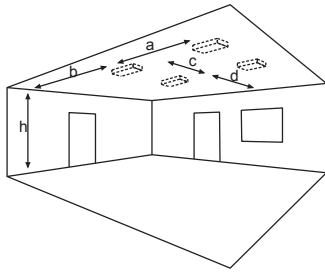
Technical specifications

Luminaire type	Luminaires for central battery systems		Self contained luminaires
	15 W LED-bar	30 W LED-bar	15 W LED-bar
Illuminant	15 W LED-bar	30 W LED-bar	15 W LED-bar
Connecting terminals	3 x 2.5 mm ² for double assignment		
Colour	white		
Material	PMMA/sheet steel (light cover opal)		
Light color	4000K		
Mounting type	Wall-/ceiling mounting		
Dimensions (Ø x H)	WM/DM 400 x 125 mm		
Protection class	IP40		
Safety class	I		
IK Safety class	IK03		
Light current (mains)	1250 lm	2500 lm	1000 lm
Light current (emergency)			
Rated operating time 1h	-	-	600 lm
Rated operating time 3h	-	-	600 lm
Rated operating time 8h	-	-	270 lm
Luminous flux			
Emergency (DC) / mains			
Rated operating time 1h	-	-	60% / 100%
Rated operating time 3h	-	-	60% / 100%
Rated operating time 8h	-	-	25% / 100%
Power consumption	19.2 VA	25 VA	18.7 VA
Battery current input	50 mA	100 mA	-
Battery duration			
Battery operation	-	-	1h / 3h / 8h
Voltage supply	230V 50/60Hz; 220V DC +25/-20%		230V 50/60Hz
NiMH-battery			
Rated operating time 1h	-	-	4,8V 2,0Ah
Rated operating time 3h	-	-	4,8V 4,2Ah
Rated operating time 8h	-	-	4,8V 4,2Ah
Temperature range	-10°C to +40°C		-
Non-maintained mode	-		0°C to +35°C
Maintained mode	-		-5°C to +30°C
optional			
Multi-switch and monitoring module	DALI ELC MSU3 SET009 SET010		-
Self monitoring	-		SELF CHECK
Central monitoring	-		SAFELOG Line
Wireless monitoring	-		SAFELOG Wireless

Wall-/ceiling mounting



Lighting data and tables of luminaire distances (E = 1,25 lx)



Ceiling mounting

Luminaires for central battery systems Wide area illumination

Distance table for plane emergency routes / distance data in meters

Illuminant: 15W LED-bar
Luminous flux emergency / mains: 1250lm

h	2.00	3.00	4.00	5.00	6.00	7.00	8.00	9.00	10.00	11.00	12.00	13.00	14.00	15.00
a	11.40	13.70	15.10	16.30	17.10	17.70	18.10	18.20	18.20	17.90	17.50	16.70	15.80	13.60
b	4.60	5.40	5.90	6.20	6.40	6.40	6.30	6.00	5.50	4.80	3.70	1.60	1.60	1.50
c	11.40	13.70	15.10	16.30	17.10	17.70	18.10	18.20	18.20	17.90	17.50	16.70	15.80	13.60
d	4.60	5.40	5.90	6.20	6.40	6.40	6.30	6.00	5.50	4.80	3.70	1.60	1.60	1.50

Luminaires for central battery systems Wide area illumination

Distance table for plane emergency routes / distance data in meters

Illuminant: 30W LED-bar
Luminous flux emergency / mains: 2500lm

h	2.00	3.00	4.00	5.00	6.00	7.00	8.00	9.00	10.00	11.00	12.00	13.00	14.00	15.00	16.00	17.00	18.00	19.00	20.00	21.00
a	11.40	17.00	18.90	20.70	21.80	22.90	23.80	24.50	25.10	25.60	25.60	25.90	25.70	25.60	25.20	24.70	24.10	23.10	22.10	20.00
b	4.60	6.80	7.50	8.10	8.50	8.80	9.00	9.10	9.10	8.90	8.70	8.30	7.90	7.20	6.40	5.20	3.40	3.30	3.20	2.00
c	11.40	17.00	18.90	20.70	21.80	22.90	23.80	24.50	25.10	25.60	25.60	25.90	25.70	25.60	25.20	24.70	24.10	23.10	22.10	20.00
d	4.60	6.80	7.50	8.10	8.50	8.80	9.00	9.10	9.10	8.90	8.70	8.30	7.90	7.20	6.40	5.20	3.40	3.30	3.20	2.00

Self contained luminaires Wide area illumination

Distance table for plane emergency routes / distance data in meters

Illuminant: 15W LED-bar
Luminous flux emergency / mains: 600lm/1000lm – Rated operating time: 1h

h	2.00	3.00	4.00	5.00	6.00	7.00	8.00	9.00	10.00
a	9.30	10.70	11.70	12.30	12.60	12.60	12.20	11.60	10.00
b	3.70	4.20	4.40	4.40	4.20	3.80	2.90	1.10	1.00
c	9.30	10.70	11.70	12.30	12.60	12.60	12.20	11.60	10.00
d	3.70	4.20	4.40	4.40	4.20	3.80	2.90	1.10	1.00

Self contained luminaires Wide area illumination

Distance table for plane emergency routes / distance data in meters

Illuminant: 15W LED-bar
Luminous flux emergency / mains: 600lm/1000lm – Rated operating time: 3h

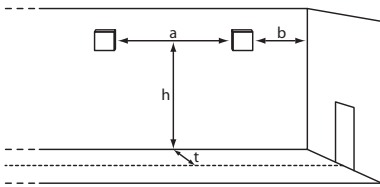
h	2.00	3.00	4.00	5.00	6.00	7.00	8.00	9.00	10.00
a	9.30	10.70	11.70	12.30	12.60	12.60	12.20	11.60	10.00
b	3.70	4.20	4.40	4.40	4.20	3.80	2.90	1.10	1.00
c	9.30	10.70	11.70	12.30	12.60	12.60	12.20	11.60	10.00
d	3.70	4.20	4.40	4.40	4.20	3.80	2.90	1.10	1.00

Self contained luminaires Wide area illumination

Distance table for plane emergency routes / distance data in meters

Illuminant: 15W LED-bar
Luminous flux emergency / mains: 270lm/1000lm – Rated operating time: 8h

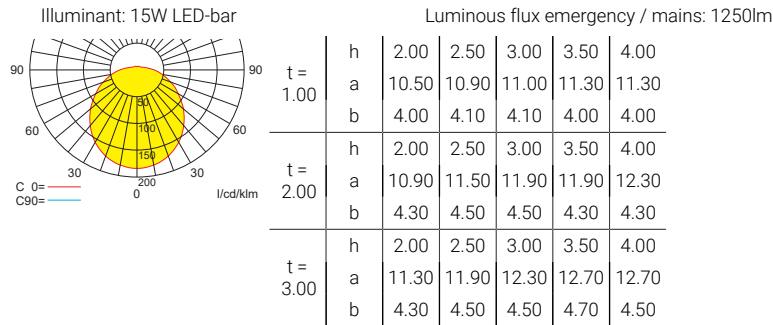
h	2.50	3.00	3.50	4.00	4.50	5.00	5.50	6.00	6.50	7.00
a	7.70	8.10	8.30	8.40	8.40	8.40	8.10	7.80	7.30	6.20
b	2.90	3.00	2.90	2.80	2.60	2.30	1.80	0.90	0.80	0.80
c	7.70	8.10	8.30	8.40	8.40	8.40	8.10	7.80	7.30	6.20
d	2.90	3.00	2.90	2.80	2.60	2.30	1.80	0.90	0.80	0.80



Wall mounting

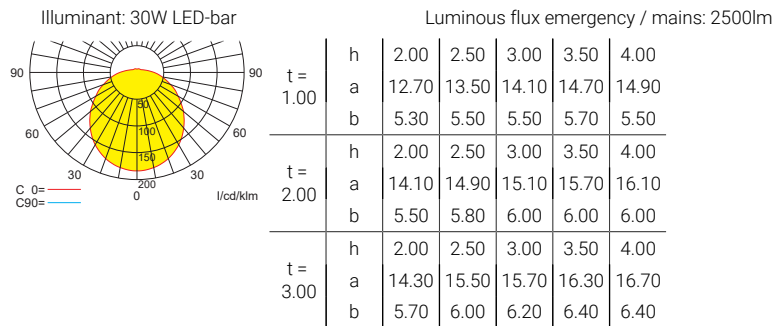
Luminaires for central battery systems Wide area illumination

Distance table for plane emergency routes / distance data in meters



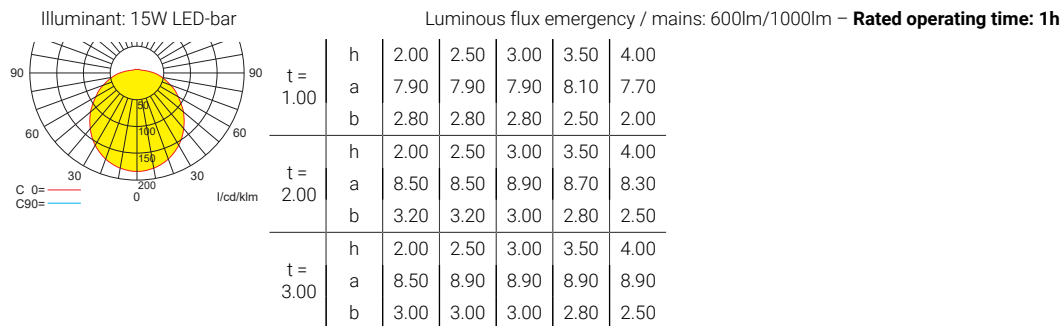
Luminaires for central battery systems Wide area illumination

Distance table for plane emergency routes / distance data in meters



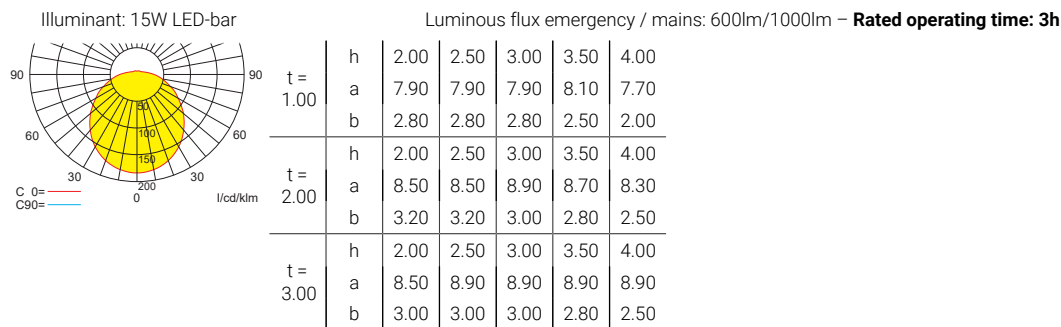
Self contained luminaires Wide area illumination

Distance table for plane emergency routes / distance data in meters



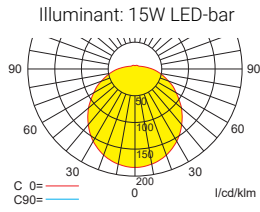
Self contained luminaires Wide area illumination

Distance table for plane emergency routes / distance data in meters



Self contained luminaires Wide area illumination

Distance table for plane emergency routes / distance data in meters



Luminous flux emergency / mains: 270lm/1000lm – **Rated operating time: 8h**

t = 1.00	h	2.00	2.50	3.00
	a	5.50	5.50	5.10
	b	1.10	1.70	1.10
t = 2.00	h	2.00	2.50	3.00
	a	5.90	5.90	5.50
	b	1.90	1.70	1.30
t = 3.00	h	2.00	2.50	3.00
	a	5.50	5.50	5.50
	b	1.30	1.10	0.60