



SAFELOG TOUCH WIRELESS

Monitoring and control unit for self-contained luminaires (ATS) according to EN 62034

The new SAFELOG control unit with integrated wireless function and touch display for monitoring and controlling self-contained luminaires. The SAFELOG TOUCH WIRELESS control unit can monitor up to 1.000 wireless self-contained luminaires (SRD 868 MHz). In addition, up to 500 bus-monitored self-contained luminaires (RS485) can be connected.

Available in 3 versions (wireless + bus) with max. 1.000 + 500 / 100 + 100 / 50 + 50 self-contained luminaires (SRD 868 MHz and RS485). All connected self-contained luminaires are controlled via a multi-touch 5" color display, which shows the operating status of the individual luminaires.

The SAFELOG control unit has a network connection with which the device status can be retrieved using the built-in web server. The control unit can be remotely controlled via the integrated web server and building plans can be stored.



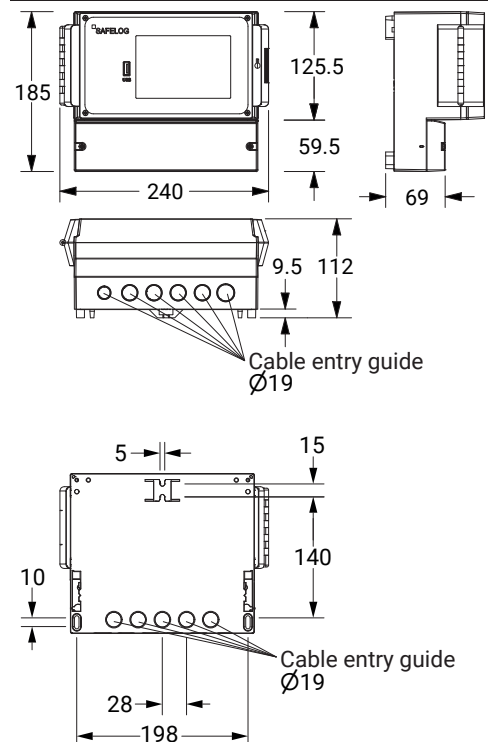
Equipment

- 5" multi-touch color display including a USB port for connecting external storage, a USB printer, a keyboard or a mouse
- State of the luminaires is shown with icons and through plain text
- Automatic commissioning including luminaire search, no manual addressing of luminaires is necessary
- Combination of wireless and wired bus-monitored luminaires possible
- Free entry of luminaire destination designations with max. 30 characters
- RJ45 network connection with TCP / IP protocol
- Integrated web server incl. web visualization for system monitoring with web control and building visualization
- IP panel function for monitoring up to 30 SAFELOG systems in the network
- E-mail notification to distribution list / messages are freely adjustable
- Automatic function and duration test (time freely selectable)
- Electronic test logbook stores all events in the control unit for at least 4 years / Evaluation and analysis of the test logbook results via the web server
- 48 freely programmable groups respectively group assignments
- 24 time switches freely programmable
- Luminaires switchable in maintained and non-maintained mode (all / per bus circuit / per group / per luminaire)
- Password-protected access across two levels (user / installer)

Technical specifications

Power supply	1/N/PE AC 50Hz 230V
Power consumption	12,0 W
Mains connectors	1.5 mm ² to 2.5 mm ²
Frequency range	863 – 870 MHz (SRD Band)
Max. transmission power	10 dBm
Wireless range	max. 30 m with direct visual contact
Bus connections	2 x RS485 (5V level) / reverse polarity protected
Switching outputs	3 x change-over contacts (programmable, potential-free)
Switching inputs	2 x optocouplers (programmable, 24V - 230V AC / DC)
Extra power supply	24V / 40mA for external modules
Ambient temperature	0°C to +35°C
Cable entry	from back and below
Dimensions (W x H x D)	240 x 185 x 112 mm
Protection class	IP65
Safety class	II

Wall mounting



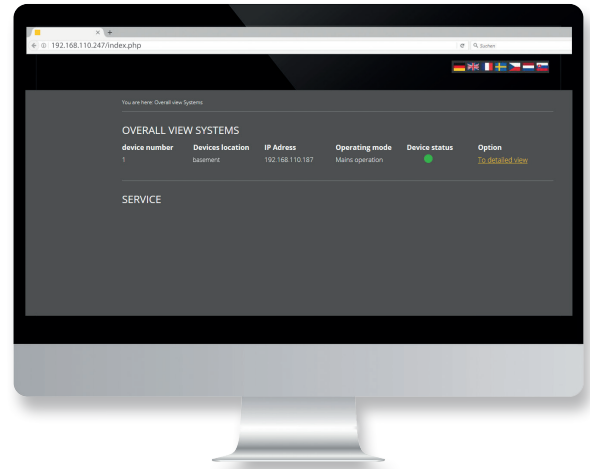
WEB VISUALIZATION

The SAFELOG TOUCH WIRELESS system includes an integrated RJ45 network connection with which the device status can be retrieved using the built-in web server.

The SAFELOG TOUCH WIRELESS system can be controlled remotely via the web server and building plans can be stored for the building visualization

No additional installations in the network are necessary. A device overview is available to the user in real time by entering the IP address of the SAFELOG TOUCH WIRELESS system in the web browser.

No data has to be imported or read in. All actions take place directly on the SAFELOG TOUCH WIRELESS system.

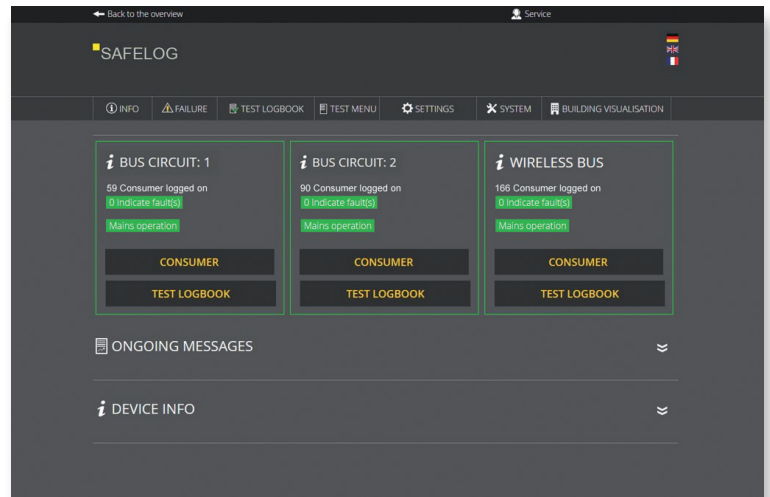


Overview of the control center in the web browser

Detailed view

In the detailed view level, you navigate in the same way as you would at the SAFELOG TOUCH WIRELESS system.

- »Status« display for the bus circuit and individual consumer
- Clear presentation of each bus circuit with all consumers
- Starting and ending function tests with individually selectable times including test logging
- Print and file export functions for all memories (log book), tables, overviews and views
- Configuring groups and time switches
- Setting up E-mail recipients (notification)
- Programming of switching inputs and outputs
- User and rights management with several password-protected user profiles.
The administration of rights and passwords corresponds 1: 1 to the rights and passwords of the SAFELOG TOUCH WIRELESS system



Building visualization

The building visualization gives you an optical presentation of the safety lighting in the building. The visualization gives the user a quick overview of all consumers connected to the SAFELOG TOUCH WIRELESS system.

You can see the status of the SAFELOG TOUCH WIRELESS system and consumers at any time and react promptly in the event of an error. In addition, the building visualization helps users (including those who are not local) to orientate themselves quickly in the building.

The plans for the building visualization are stored as images (*.PNG, *.JPG) in the system. Up to 200 different plans can be stored.



Connection

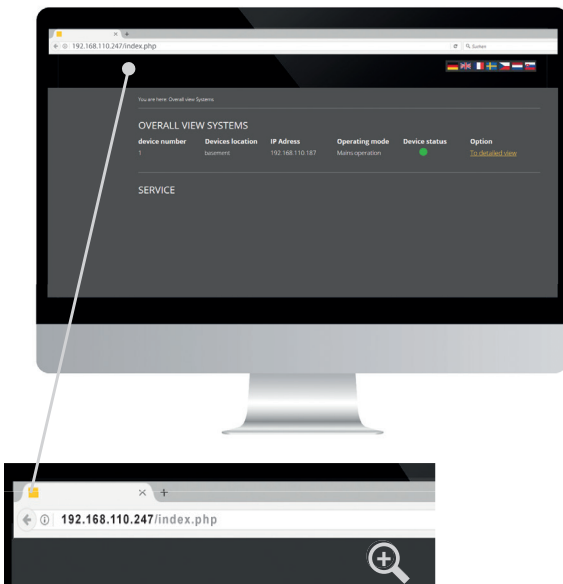
The SAFELOG TOUCH WIRELESS system is integrated into a local network for the use of web visualization. Access to the system within the network must be administered and set up by a responsible IT department.

Connection example

Enter the address via the web browser



Connection example:
Direct access via IP address,
e.g.: 192.168.110.247



IP: 192.168.110.247