



A-LUX R WM/DM

Combined emergency luminaire in compliance with EN 60598-1/2-22 and EN 1838.

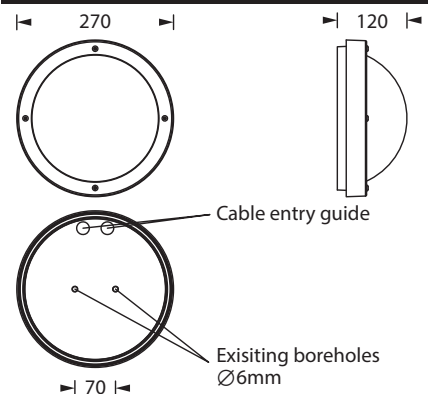
Robust general and safety luminaire with a round luminaire body made of powder-coated die-cast aluminum in white or graphite grey and an opal polycarbonate luminaire cover. The self-contained luminaire can also be equipped with a battery heater to extend the temperature range down to -20°C. In a set with a supply unit for indoor installation and a light unit for outdoor installation, the temperature range can even be extended to -35°C. The luminaire is equipped with 4x 3.5W LED strips and provides 1.160lm with a light color of 4.000K.



Technical specifications

Luminaire type	Luminaires for central battery systems	Self contained luminaires
Illuminant	4 x 3.5 W LED-bar	4 x 3.5 W LED-bar
Connecting terminals	3 x 2.5 mm ² for double assignment	
Colour	white / graphite grey	
Material	Aluminum die-cast/Polycarbonate	
Light color	4000K	
Mounting type	Wall-/ceiling mounting	
Dimensions (Ø x H)	WM/DM 270 x 120 mm	
Protection class	IP65	
Safety class	I	
IK Safety class	IK10	
Light current (mains)	1160 lm	1160 lm
Light current (emergency)		
Rated operating time 1h	-	660 lm
Rated operating time 3h	-	660 lm
Rated operating time 8h	-	330 lm
Luminous flux		
Emergency (DC) / mains		
Rated operating time 1h	-	56% / 100%
Rated operating time 3h	-	56% / 100%
Rated operating time 8h	-	28% / 100%
Power consumption	13 VA	18.7 VA
Battery current input	34 mA	-
Battery duration	-	1h / 3h / 8h
Battery operation		
Voltage supply	230V 50/60Hz; 220V DC +25/-20%	230V 50/60Hz
NiMH-battery		
Rated operating time 1h	-	4,8V 2,0Ah 4,8V 2,0Ah + AkH
Rated operating time 3h	-	4,8V 4,2Ah 4,8V 4,2Ah + AkH
Rated operating time 8h	-	4,8V 4,2Ah 4,8V 4,2Ah + AkH
Temperature range	-10°C to +40°C (monitored) / -20°C to +40°C (unmonitored)	-
Non-maintained mode	-	0°C to +35°C
Maintained mode	-	-5°C to +30°C
optional		
Multi-switch and monitoring module	ELC MSÜ3 SET009 SET010	-
Self monitoring	-	SELF CHECK
Central monitoring	-	SAFELOG Line
Wireless monitoring	-	SAFELOG Wireless

Wall-/ceiling mounting



Lighting data and tables of luminaire distances (E = 1,25 lx)



Ceiling mounting

Luminaires for central battery systems Wide area illumination

Distance table for plane emergency routes / distance data in meters

Illuminant: 4 x 3.5W LED-bar
 Luminous flux emergency / mains: 1160lm

h	2.50	3.00	3.50	4.00	4.50	5.00	5.50	6.00	6.50	7.00	7.50	8.00	8.50	9.00	9.50	10.00	10.50	11.00	12.00
a	12.50	13.40	14.10	14.70	15.20	15.60	16.00	16.30	16.60	16.70	16.90	16.90	17.00	16.90	16.80	16.70	16.50	16.30	15.60
b	5.00	5.30	5.50	5.70	5.80	5.90	6.00	6.00	6.00	5.90	5.80	5.70	5.50	5.30	5.00	4.60	4.20	3.60	1.60
c	12.50	13.40	14.10	14.70	15.20	15.60	16.00	16.30	16.60	16.70	16.90	16.90	17.00	16.90	16.80	16.70	16.50	16.30	15.60
d	5.00	5.30	5.50	5.70	5.80	5.90	6.00	6.00	6.00	5.90	5.80	5.70	5.50	5.30	5.00	4.60	4.20	3.60	1.60

Self contained luminaires Wide area illumination

Distance table for plane emergency routes / distance data in meters

Illuminant: 4 x 3.5W LED-bar
 Luminous flux emergency / mains: 660lm/1160lm – **Rated operating time: 1h**

h	2.50	3.00	3.50	4.00	4.50	5.00	5.50	6.00	6.50	7.00	7.50	8.00	8.50	9.00
a	10.40	11.00	11.60	12.00	12.30	12.50	12.70	12.80	12.80	12.70	12.60	12.40	12.20	11.80
b	4.10	4.30	4.40	4.50	4.50	4.50	4.40	4.30	4.10	3.80	3.50	3.00	2.40	1.40
c	10.40	11.00	11.60	12.00	12.30	12.50	12.70	12.80	12.80	12.70	12.60	12.40	12.20	11.80
d	4.10	4.30	4.40	4.50	4.50	4.50	4.40	4.30	4.10	3.80	3.50	3.00	2.40	1.40

Self contained luminaires Wide area illumination

Distance table for plane emergency routes / distance data in meters

Illuminant: 4 x 3.5W LED-bar
 Luminous flux emergency / mains: 660lm/1160lm – **Rated operating time: 3h**

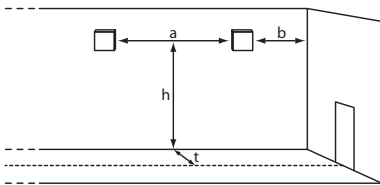
h	2.50	3.00	3.50	4.00	4.50	5.00	5.50	6.00	6.50	7.00	7.50	8.00	8.50	9.00
a	10.40	11.00	11.60	12.00	12.30	12.50	12.70	12.80	12.80	12.70	12.60	12.40	12.20	11.80
b	4.10	4.30	4.40	4.50	4.50	4.50	4.40	4.30	4.10	3.80	3.50	3.00	2.40	1.40
c	10.40	11.00	11.60	12.00	12.30	12.50	12.70	12.80	12.80	12.70	12.60	12.40	12.20	11.80
d	4.10	4.30	4.40	4.50	4.50	4.50	4.40	4.30	4.10	3.80	3.50	3.00	2.40	1.40

Self contained luminaires Wide area illumination

Distance table for plane emergency routes / distance data in meters

Illuminant: 4 x 3.5W LED-bar
 Luminous flux emergency / mains: 330lm/1160lm – **Rated operating time: 8h**

h	2.50	3.00	3.50	4.00	4.50	5.00	5.50	6.00	6.50
a	8.20	8.60	8.80	9.00	9.10	9.00	8.90	8.60	8.20
b	3.10	3.20	3.20	3.10	2.90	2.70	2.30	1.70	0.30
c	8.20	8.60	8.80	9.00	9.10	9.00	8.90	8.60	8.20
d	3.10	3.20	3.20	3.10	2.90	2.70	2.30	1.70	0.30



Wall mounting

Luminaires for central battery systems Wide area illumination

Distance table for plane emergency routes / distance data in meters

Illuminant: 4 x 3.5W LED-bar Luminous flux emergency / mains: 1160lm

t =	h	Luminous flux emergency / mains: 1160lm				
		2.00	2.50	3.00	3.50	4.00
1.00	a	10.00	10.50	11.00	11.00	11.00
	b	4.00	4.00	4.00	4.00	4.00
	h	2.00	2.50	3.00	3.50	4.00
2.00	a	10.50	11.00	11.50	11.50	12.00
	b	4.00	4.50	4.50	4.50	4.00
	h	2.00	2.50	3.00	3.50	4.00
3.00	a	10.50	11.00	11.50	12.00	12.00
	b	4.00	4.50	4.50	4.50	4.50
	h	2.00	2.50	3.00	3.50	4.00

Self contained luminaires Wide area illumination

Distance table for plane emergency routes / distance data in meters

Illuminant: 4 x 3.5W LED-bar Luminous flux emergency / mains: 660lm/1160lm – **Rated operating time: 1h**

t =	h	Luminous flux emergency / mains: 660lm/1160lm – Rated operating time: 1h				
		2.00	2.50	3.00	3.50	4.00
1.00	a	8.00	8.50	8.50	8.50	8.50
	b	3.00	3.00	3.00	3.00	2.50
	h	2.00	2.50	3.00	3.50	4.00
2.00	a	8.50	9.00	9.00	9.00	9.00
	b	3.00	3.50	3.50	3.00	3.00
	h	2.00	2.50	3.00	3.50	4.00
3.00	a	8.00	8.50	9.00	9.00	9.00
	b	3.00	3.00	3.00	3.00	3.00
	h	2.00	2.50	3.00	3.50	4.00

Self contained luminaires Wide area illumination

Distance table for plane emergency routes / distance data in meters

Illuminant: 4 x 3.5W LED-bar Luminous flux emergency / mains: 660lm/1160lm – **Rated operating time: 3h**

t =	h	Luminous flux emergency / mains: 660lm/1160lm – Rated operating time: 3h				
		2.00	2.50	3.00	3.50	4.00
1.00	a	8.00	8.50	8.50	8.50	8.50
	b	3.00	3.00	3.00	3.00	2.50
	h	2.00	2.50	3.00	3.50	4.00
2.00	a	8.50	9.00	9.00	9.00	9.00
	b	3.00	3.50	3.50	3.00	3.00
	h	2.00	2.50	3.00	3.50	4.00
3.00	a	8.00	8.50	9.00	9.00	9.00
	b	3.00	3.00	3.00	3.00	3.00
	h	2.00	2.50	3.00	3.50	4.00

Self contained luminaires Wide area illumination

Distance table for plane emergency routes / distance data in meters

Illuminant: 4 x 3.5W LED-bar Luminous flux emergency / mains: 330lm/1160lm – **Rated operating time: 8h**

t =	h	Luminous flux emergency / mains: 330lm/1160lm – Rated operating time: 8h				
		2.00	2.50	3.00	3.50	4.00
1.00	a	6.50	6.00	6.00	5.50	5.00
	b	2.50	2.00	2.00	1.50	1.00
	h	2.00	2.50	3.00	3.50	4.00
2.00	a	6.00	6.50	6.00	6.00	5.50
	b	2.50	2.00	2.00	1.50	1.00
	h	2.00	2.50	3.00	3.50	4.00
3.00	a	5.50	6.00	6.00	5.50	5.00
	b	2.00	2.00	1.50	1.00	0.50
	h	2.00	2.50	3.00	3.50	4.00